

# EPAULETTE SHARK

THE SHARK THAT WALKS ON LAND!

EPAULETTE SHARK  
*Hemiscyllium ocellatum*  
Least Concern (Australia)

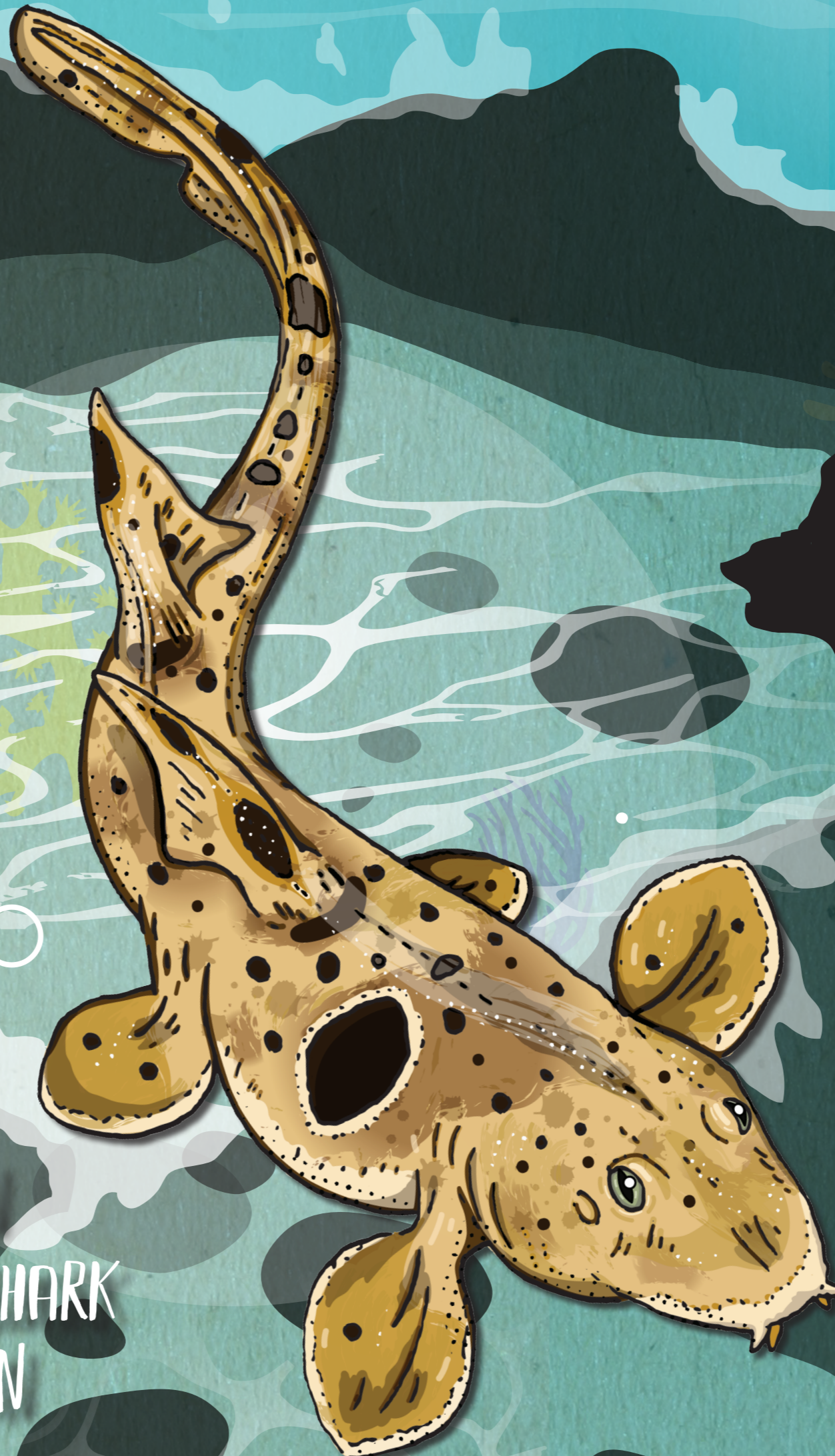
## EPAULETTE SHARK FACTS

This shark walks! Using its fins, epaulette sharks waddle across reef pools when the tide is out in search of prey and deeper, cooler pools.

Their brains can tolerate extremely low levels of oxygen and this 'super power' is helping us learn how to treat brain damage in heart attack and stroke victims.

Great Barrier Reef snorkellers and scuba divers love these little sharks.

Max size of 107 cm



Females mature at around nine years old and lay two eggs at a time every 14 days, producing up to 20 pups each year. Eggs take approximately four months to hatch.



AUSTRALIAN  
EPAULETTE SHARK  
DISTRIBUTION

## THREATS & SOLUTIONS



**THREAT:** Warming oceans and coral bleaching. These sharks depend on healthy reef ecosystems for their food and habitat.

**SOLUTION:** A rapid transition from fossil fuels to clean renewable energy.

References:  
1. IUCN Red List: Epaulette shark <https://www.iucnredlist.org/species/161360/68644464>

Become a champion here: [sharkchampions.org.au](http://sharkchampions.org.au)

**SharkChampions**  
with HSI and AMCS



Funded by Shark Conservation Fund