

EPAULETTE SHARK

THE SHARK THAT WALKS ON LAND!

EPAULETTE SHARK

Hemiscyllium ocellatum

Least Concern (Australia)

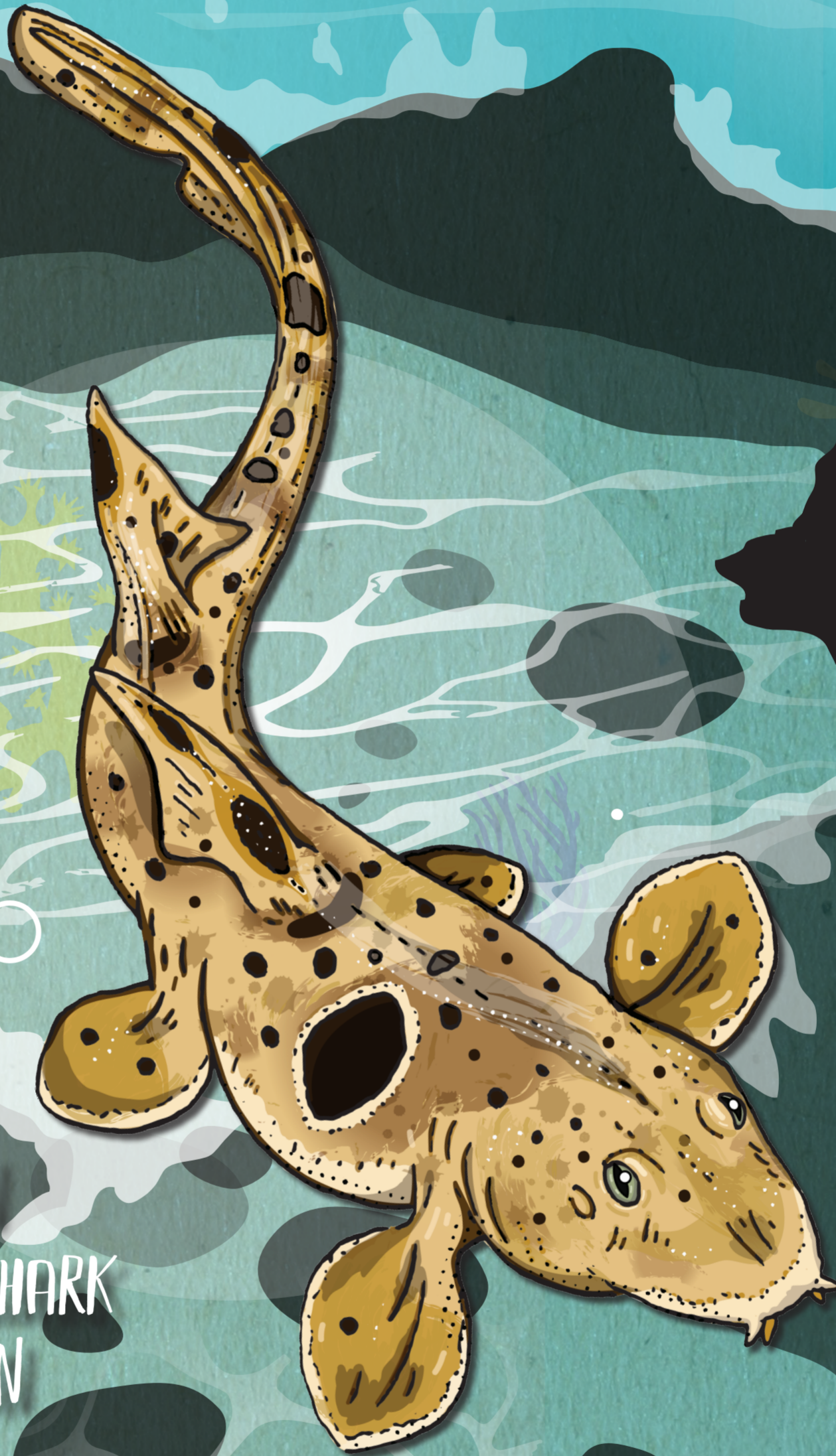
EPAULETTE SHARK FACTS

This shark walks! Using its fins, epaulette sharks waddle across reef pools when the tide is out in search of prey and deeper, cooler pools.

Their brains can tolerate extremely low levels of oxygen and this 'super power' is helping us learn how to treat brain damage in heart attack and stroke victims.

Great Barrier Reef snorkellers and scuba divers love these little sharks.

Max size of 107 cm



Females mature at around nine years old and lay two eggs at a time every 14 days, producing up to 20 pups each year. Eggs take approximately four months to hatch.

AUSTRALIAN EPAULETTE SHARK DISTRIBUTION



THREATS & SOLUTIONS



THREAT: Warming oceans and coral bleaching. These sharks depend on healthy reef ecosystems for their food and habitat.

SOLUTION: A rapid transition from fossil fuels to clean renewable energy.

References:
1. IUCN Red List: Epaulette shark <https://www.iucnredlist.org/species/161360/68644464>

Become a champion here: sharkchampions.org.au

SharkChampions
with HSI and AMCS



Shark
Conservation
Fund

Funded by Shark
Conservation Fund